

SUNTEK *Tires*
American owned and designed since 2000s

PRODUCT CATALOG 

Powered by tech, Driven with style





HD TRAIL II

SEMI STEEL SPECIAL TRAILER

The Suntek HD Trail II is a semi-steel special trailer tire engineered for higher load capacity, providing year-round traction, durability and increased mileage.

FEATURES

REINFORCED STRUCTURE

Full nylon overlayer construction reinforced with two steel belts offers superior heavy-duty ability.

HEAT DISPERSION EFFICIENCY

Unique decoupling shoulder design originated from all-ster truck tire design helps to disperse heat and thus extend useful service life span.

SUPERIOR TRACTION

Double widened grooves provide superior traction and durability for on-and-off road applications.

LONGER SERVICE LIFE

Wear resistance tread formula highly increases mileage and service life, promoting lower costs per mile.



BENEFITS



GEOMETRICAL BLOCKS
STRONGER PERFORMANCE



DECOUPLING DESIGN
WEAR & HEAT RESISTANCE



OPTIMIZED COMPOUND
LONGER SERVICE LIFE

SPECIFICATIONS

SIZE	LOAD INDEX	SPEED RATING	PLY RATING	TREAD DEPTH (32NDS)	STANDARD RIM (INCH)	SECTION WIDTH (INCH)	OVERALL DIMETER (INCH)	MAX LOAD (LBS)	MAX PRESSURE (PSI)
ST175/80R13	91/87	M	6/C	8.2	5.00	6.8	23.7	1360/1200	50
ST175/80R13	97/93	M	8/D	8.2	5.00	6.8	23.7	1610/1450	65
ST205/75R14	100/96	M	6/C	8.2	5.50	7.7	25.7	1760/1570	50
ST205/75R14	105/101	M	8/D	8.2	5.50	7.7	25.7	2040/1820	65
ST215/75R14	102/98	M	6/C	8.2	6.00	8.2	26.3	1870/1650	50
ST215/75R14	108/103	M	8/D	8.2	6.00	8.2	26.3	2200/1930	65
ST205/75R15	101/97	M	6/C	8.2	5.50	7.7	26.6	1820/1610	50
ST205/75R15	107/102	M	8/D	8.2	5.50	7.7	26.6	2150/1870	65
ST205/75R15	111/106	M	10/E	8.2	5.50	7.7	26.6	2400/2090	65
ST225/75R15	113/108	M	8/D	8.2	6.00	8.4	27.8	2540/2200	65
ST225/75R15	117/112	M	10/E	8.2	6.00	8.4	27.8	2830/2470	80
ST235/80R16	124/120	M	10/E	8.2	6.50	8.4	30.4	3520/3080	80
ST235/85R16	128/124	M	12/F	8.2	6.50	8.4	30.4	3960/3520	95



PICC Product Liability Insurance covered by PICC Insurance Group against defective manufacture.

See warranty manual for complete detail on Limited Warranty Coverage.





HD PLUS

ALL STEEL SPECIAL TRAILER

The Suntek HD PLUS is an all-steel special trailer tire with enhanced compound structure and contour construction, made for high load capacity on trailer axles. The heavy duty all-steel construction delivers superior strength and durability while providing enhanced traction and straight tracking.

FEATURES

STRENGTHENED STEEL BELT CONSTRUCTURE

Improves the load capacity and durability

SPECIAL TREAD COMPOUND STRUCTURE

Offers outstanding resistance to puncture and tearing.

MIXED LUG AND BLOCK PATTERN DESIGN

Improves traction, driving and braking performance.

UNIQUE SHOULDER NOTCHES

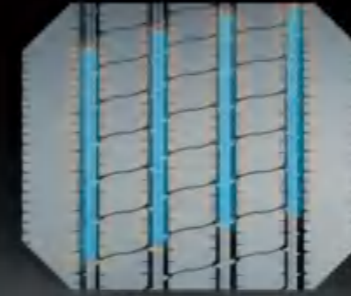
Enable quicker heat dissipation and longer service life.

INNOVATIVE STONE EJECTORS

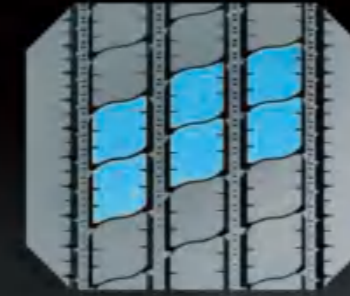
Prevent stone from retention and drilling into the body.



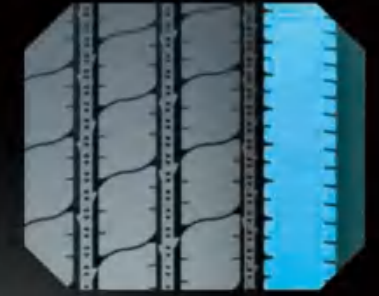
BENEFITS



LOWER COST PER MILE
HIGHER FUEL ECONOMY



HIGHER MILEAGE
WEAR RESISTANCE

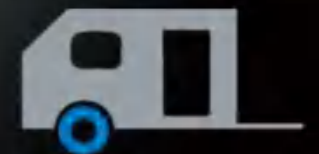


LONGER SERVICE LIFE
DRILLING PREVENTION

SPECIFICATIONS

SIZE	LOAD INDEX	SPEED RATING	PLY RATING	TREAD DEPTH (32NDS)	STANDARD RIM (INCH)	SECTION WIDTH (INCH)	OVERALL DIAMETER (INCH)	MAX LOAD (LBS)	MAX PRESSURE (PSI)
ST225/75R15	124/121	M	14	11	6.00	8.8	28.3	3520/3195	95
ST225/90R16	129/125	M	14	12	6.00	8.7	31.8	4080/3640	110

AXLES AND APPLICATIONS



PICC Product Liability Insurance covered by PICC Insurance Group against defective manufacture.

See warranty manual for complete detail on Limited Warranty Coverage.



SUNTEK

HD TRAIL+

ALL STEEL SPECIAL TRAILER

The Suntek HD Trail+ is a premium all-steel special trailer tire that offers heavy duty hauling capabilities for large equipment and heavy loads by its robust construction. It delivers an extra strength load when towing. The flat footprint and the ribbed tread design enhance the steering and the driving stability at all times. The stronger internal structure of HD Trail+ allows the tire to carry heavy loads with ease.

FEATURES

ALL STEEL 1+3 CONSTRUCTION

Provides maximum strength and superior load capacity.

5 SOLID RIBS WITH ZIG ZAG IN THE CENTER

Increases traction in all conditions and dissipate heat for pro-longer tread life.

WIDEN SHOULDER DESIGN

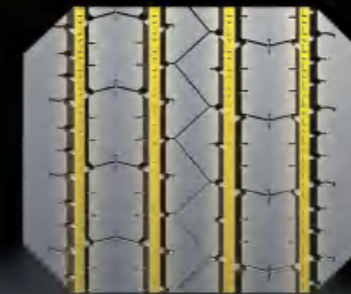
Enables better steering and driving stability when towing vehicles.

ADVANCED TREAD AND SIDWALL COMPOUND

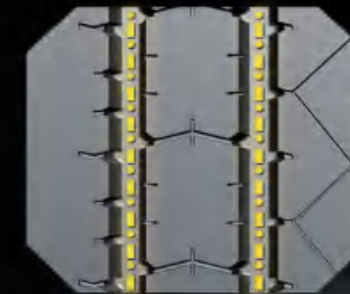
Guarantees performance, strength, and durability that caters to every hauling need.



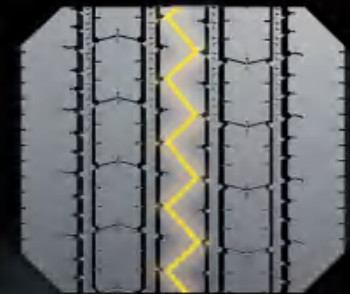
BENEFITS



HIGHWAY TREAD PATTERN
SMOOTH TOWING



STONE EJECTORS
PREVENT STONE DRILLING
/PROTECT CASING

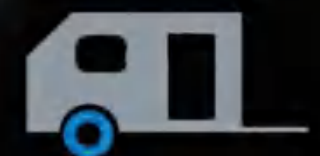


WAVY CURVES
Enhance Traction

SPECIFICATIONS

SIZE	LOAD INDEX	SPEED RATING	PLY RATING	TREAD DEPTH (32NDS)	STANDARD RIM (INCH)	SECTION WIDTH (INCH)	OVERALL DIMETER (INCH)	MAX LOAD (LBS)	MAX PRESSURE (PSI)
ST235/80R16	129/125	M	14/G	12.00	6.50	9.3	30.8	4080/3640	110
ST235/85R16	132/127	M	14/G	12.00	6.50	9.3	31.8	4400/3860	110
ST235/80R16	130/126	M	16/H	12.00	6.50	9.3	30.8	4190/3750	110
ST235/85R16	133/128	M	16/H	12.00	6.50	9.3	31.8	4540/3970	110

AXLES AND APPLICATIONS



PICC Product Liability Insurance covered by PICC Insurance Group against defective manufacture.

See warranty manual for complete detail on Limited Warranty Coverage.

SUNTEK

LIMITED WARRANTY POLICY

This Limited Warranty Policy (Warranty) provides tire replacement under certain specified conditions. This policy applies to all Suntek Tires used in normal highway service displaying warrantable conditions. There is no warranty for tires that wear out, fail or become unserviceable because of neglect or mistreatment. It is essential that you adhere to all standard safety and maintenance practices and that you carefully read the terms and conditions defined in this Warranty.

Suntek Tires hereby warrants that every new Suntek tire is free from defects in workmanship and material. Once the tread is worn down to the top of the built-in "wear indicators" in the tread grooves molded at 2/32", the tire is considered fully worn out regardless of its age or mileage.

No Charge adjustment

If a defect in workmanship and materials is found in any Suntek tire within the first 2/32" or 10% of the original usable tread, whichever comes first, Suntek Tires will replace such tire with a comparable new tire. Any costs incurred for mounting and balancing services are payable by the owner.

Prorated adjustment

If a defect in workmanship and materials is found in any Suntek tire after the first 2/32" of the original tread, a credit will be given toward the purchase of a comparable new Suntek tire in proportion to the original usable tread remaining on the returned tire to the original usable tread of the new tire. Applicable taxes on the new tire and costs of mounting and balancing services will be borne by the owner. Adjustments on out-of-balance or out-of-round tires are allowed only during the first 2/32" or 10% of the original tread.

Exclusions

- A) The Suntek Tires Warranty is limited to the original purchaser and the original vehicle on which they are mounted. The Warranty is not assignable to subsequent purchasers or vehicles.
- B) This limited Warranty is valid only in United States of America. Any tire used or equipped on a vehicle registered or regularly operated outside USA is not covered by this Warranty.
- C) The following is not covered by the Limited Warranty:

- 1) Tire branded or marked "Non-Adjustable"(N/A) or "Blemished" (Blem), or previously adjusted.
- 2) Failure, damage or irregular wear due to:
 - Road hazards (i.e. puncture, cut, snag, impact breaks, etc.), wreck or collision;
 - Fire, accident or vandalism;
 - Mechanical condition of vehicle, including misalignment, wheel imbalance, faulty shocks or brakes;
 - Misapplication of tire, use of improper inner tube;
 - Alteration of the tire or addition of alien material or transfer from one vehicle to another, and
 - Faulty re-treading procedures or materials used in the retreading process
- 3) Cost of mounting and balancing services.
- 4) Loss of time or use, inconvenience, or any incidental or consequential damages.
- 5) Tires operated at speeds that exceed posted limits, and tires used in racing or competition.
- 6) Tires used in non-standard applications.
- 7) Tires designed for highway use operated in off-road conditions.
- 8) Tires that are improperly repaired including, but not limited to; sidewall modification by addition or removal of material, tubeless tires into which anything other than air has been introduced including foam, dry or liquid balancers and sealants.
- 9) Tire/tube failure and air loss that has resulted from tube manufacturing deficiencies, tube deterioration, tire under/over inflation, improper tube and flap assembly, mounting tool damage, use of wrong size tube or a used tube, a bias tube in a radial application, applying an incompatible mounting lubricant, foreign objects contacting tube assembly.
- 10) Suntek Tires does not warrant tubes, tube fitment, tube usage or the consequences thereof unless supplied by Suntek Tires with the tire as a set.
- 11) Tires subjected to vehicle suspension deficiencies, wheels mis-alignment, improperly maintained balance of inflation
- 12) Tires submitted for ride disturbance complaints after 2/32" of a new tread wear.
- 13) Tires with the Department of Transportation (DOT) number removed.
- 14) Tires worn past the last two thirty-seconds of an inch (2/32") of original tread depth.
- 15) Ozone cracking or weather checking on tires submitted more than four years (4) after the date of manufacture.

Owners' Obligations

In order to be eligible for Suntek Tires Limited Warranty service, the owner must:

- Present the defective tire to an authorized Suntek Tires dealer;
- Present proof of purchase to the satisfaction of the dealer;
- Pay the amount due on a new tire, less the amount of credit, including taxes, mounting and balancing charges or cost of other services ordered.
- Ensure proper tire maintenance, inflation pressures & loading practices in accordance with vehicle and applicable tire guides, as well as lawful operation of vehicles and adherence to government regulations.

Legal Rights

To the extent permitted by law, Suntek Tires and its servicing agents shall not be held responsible for any of the following:

- Commercial Loss.
- Damage to or loss of property other than the tire itself.
- Incidental, indirect, special or consequential damages arising from any cause whatsoever, including negligence.

No implied or express warranties are extended beyond the time when the tire has delivered its original tread life, except for the express warranties set forth in this "Limited Warranty".

All warranties, promises and agreements, express or implied, of merchantability or otherwise, are excluded to the extent permitted by law.

NOTES



DISTRIBUTED BY: